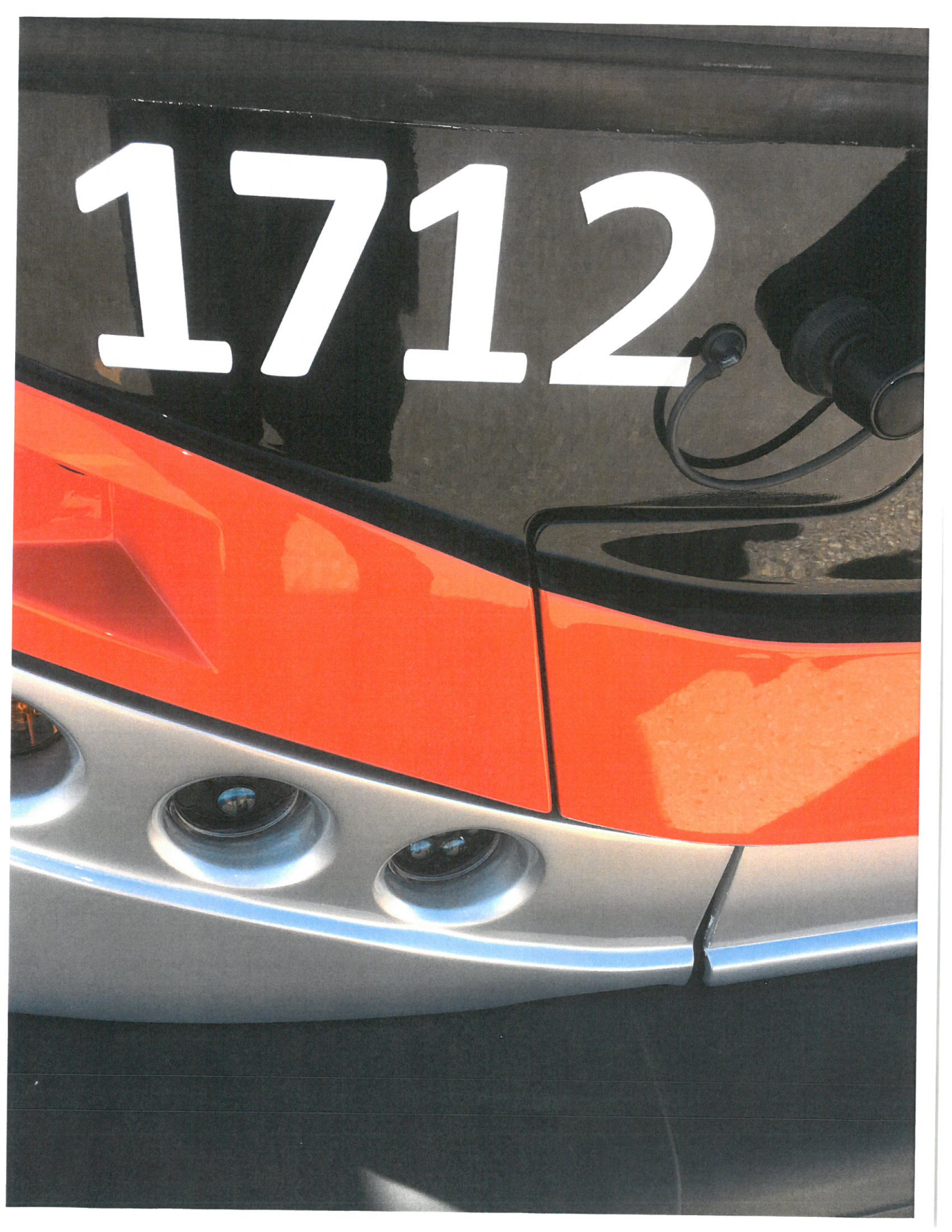
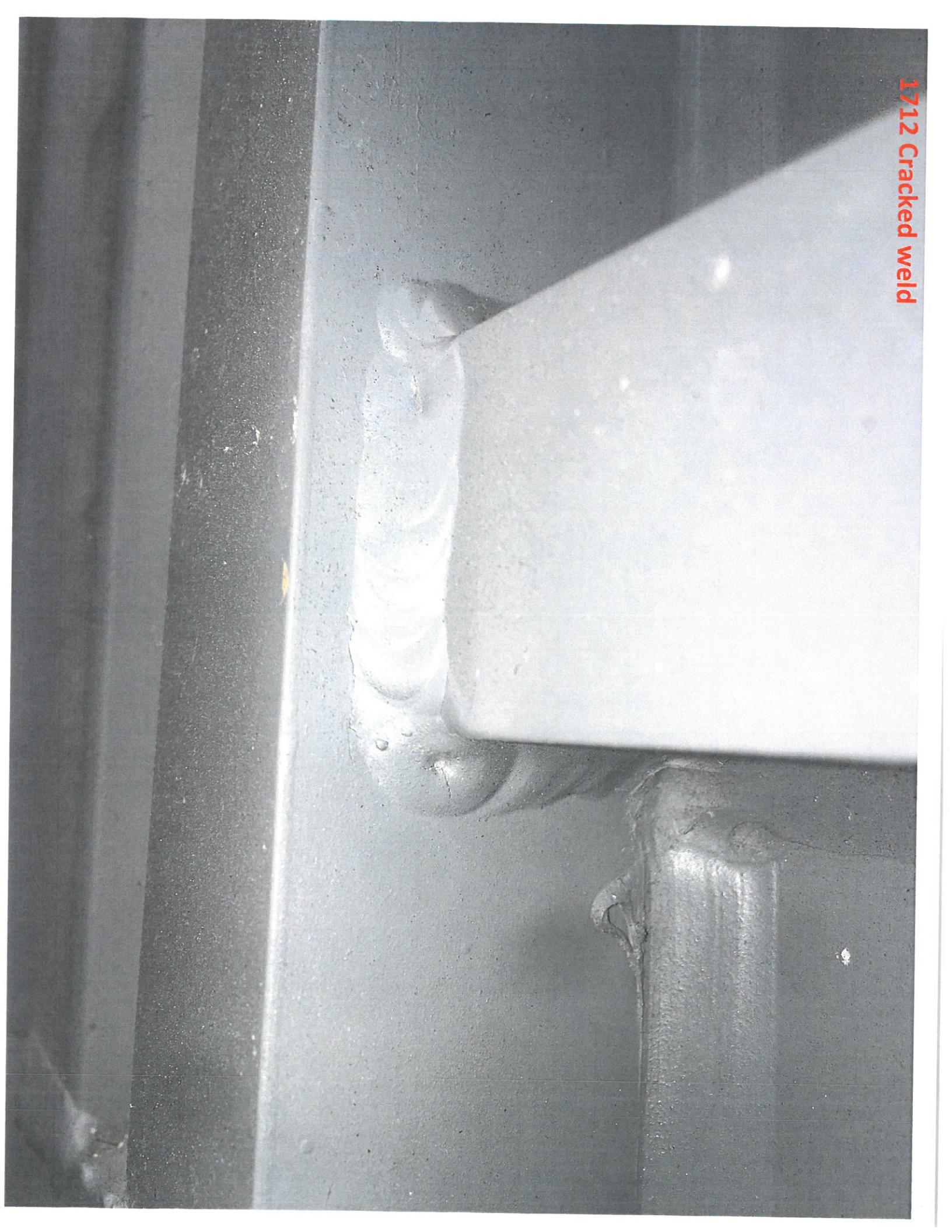


1712



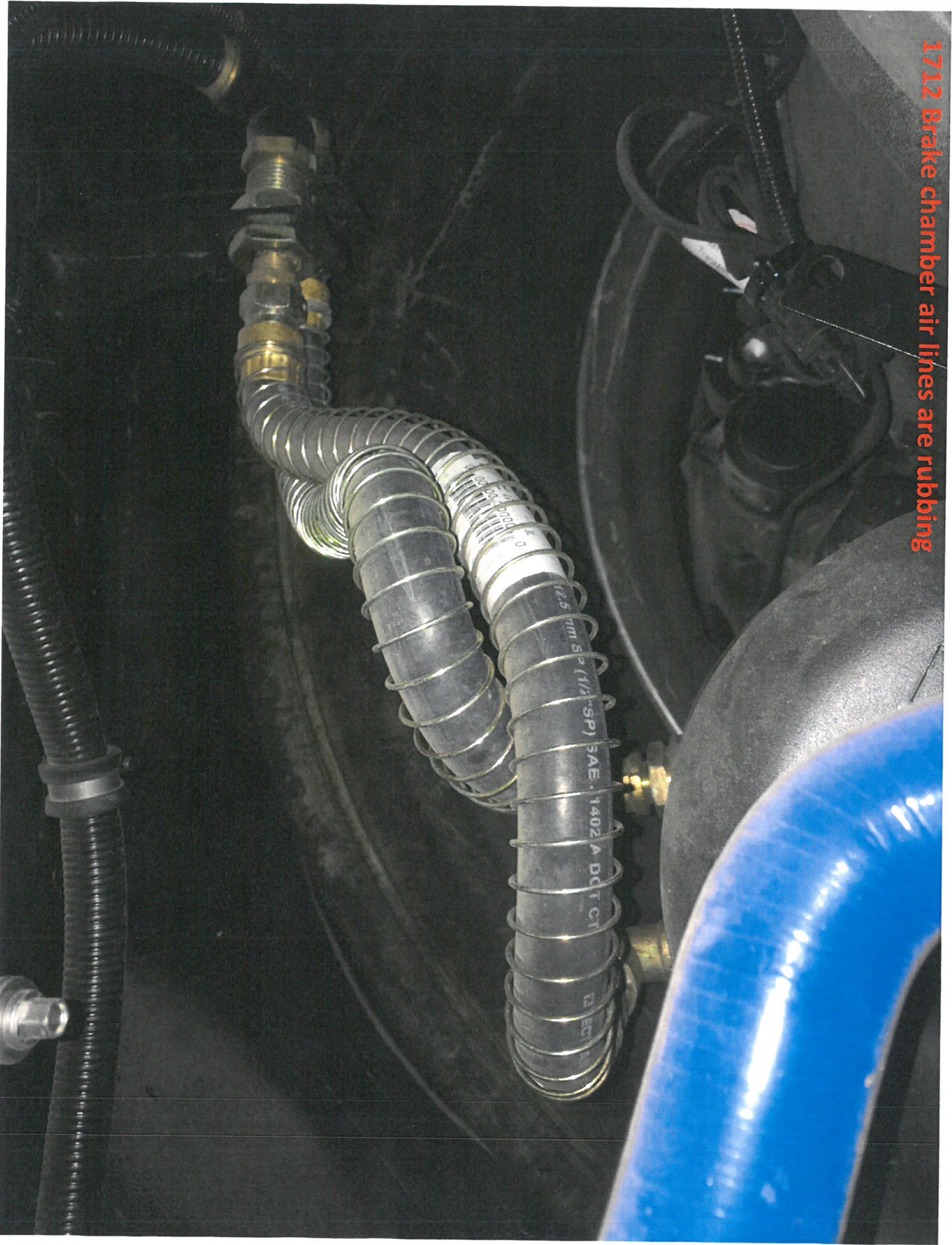


17112 Cracked weld

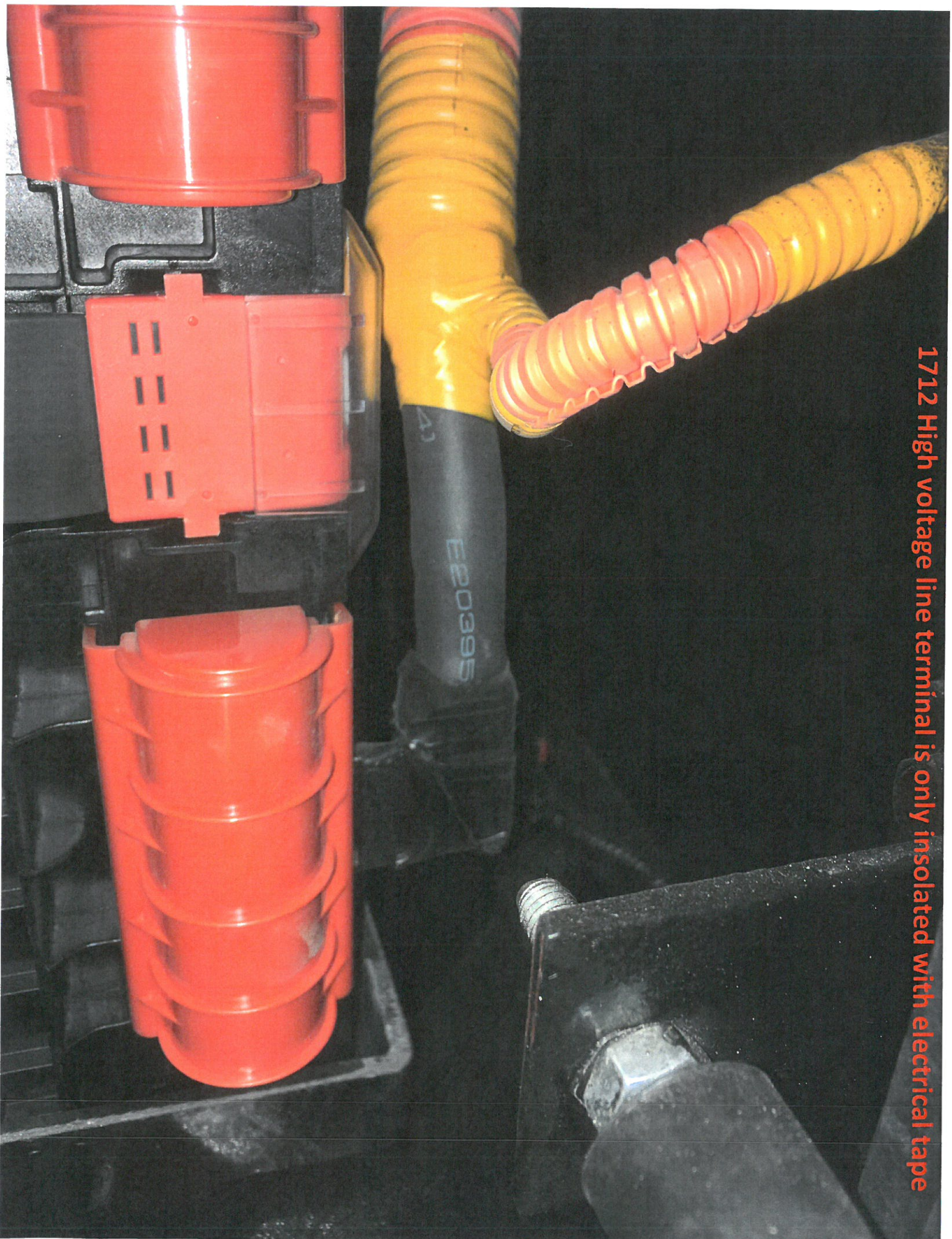




1712 Brake chamber air lines are rubbing







1712 High voltage line terminal is only insulated with electrical tape

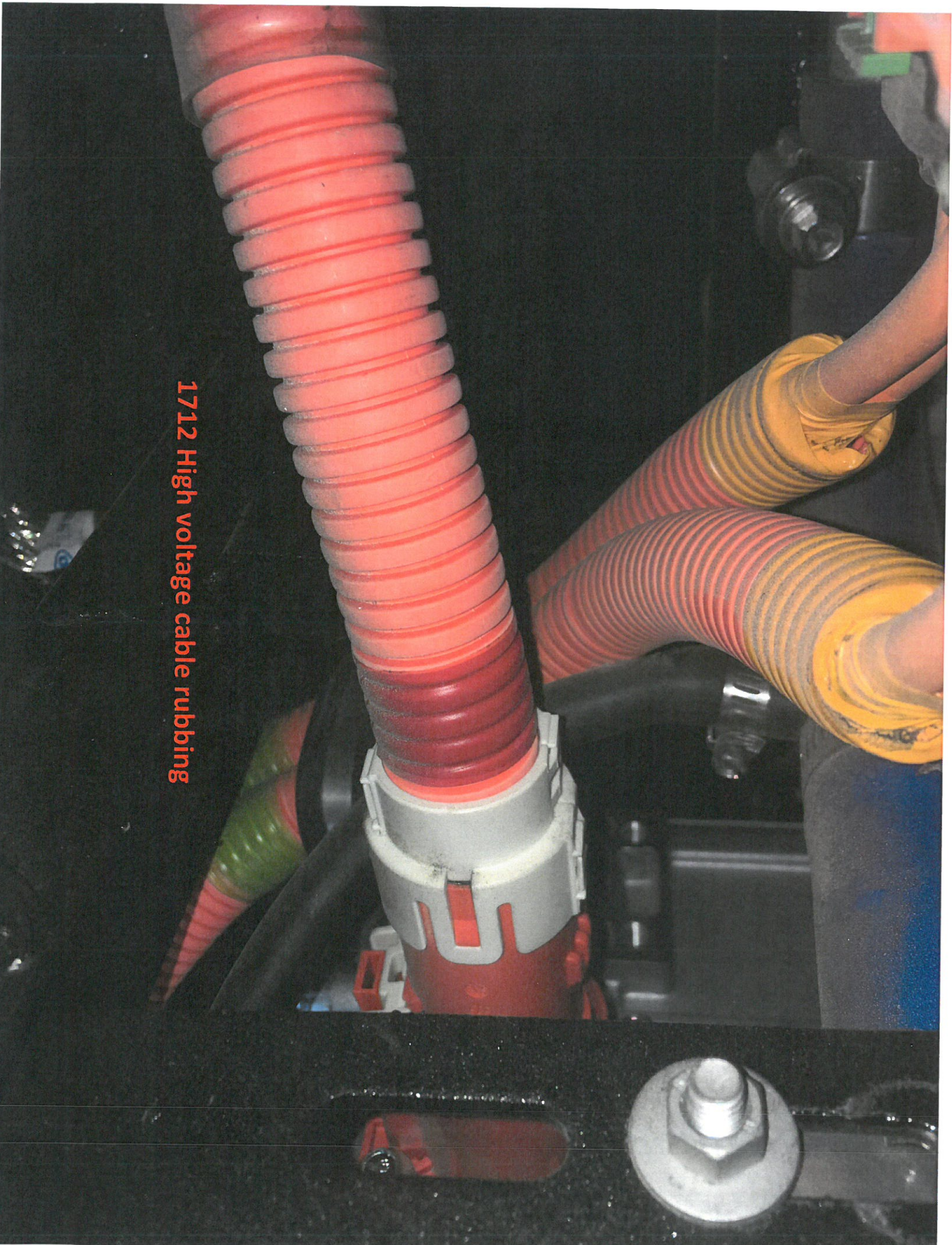




1712 High voltage cable rubbing



1712 High voltage cable rubbing





1712 High voltage cable is  
smashed



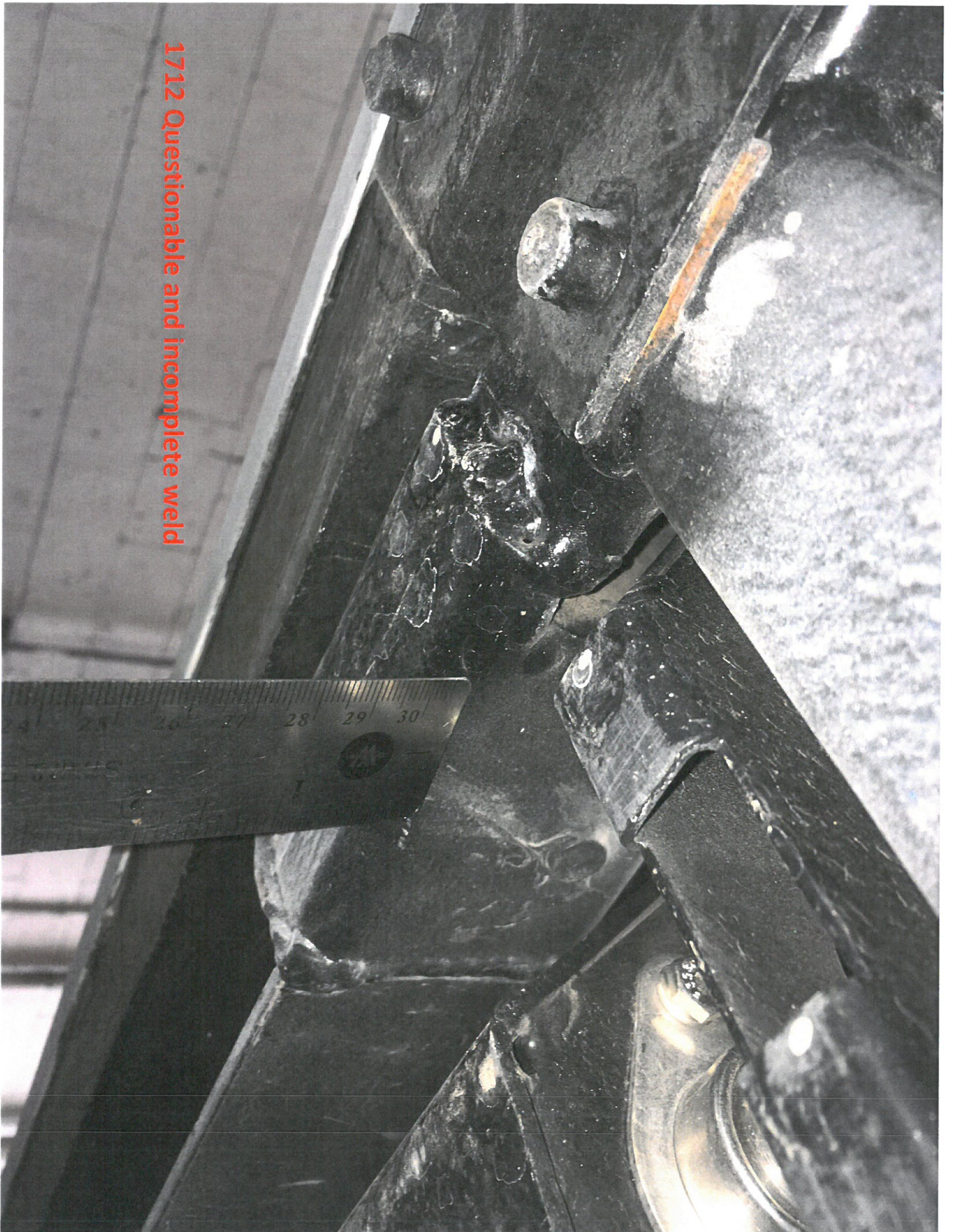


1712 Jack point is questionable





1712 Questionable and incomplete weld





1712 High voltage  
cable rubbing



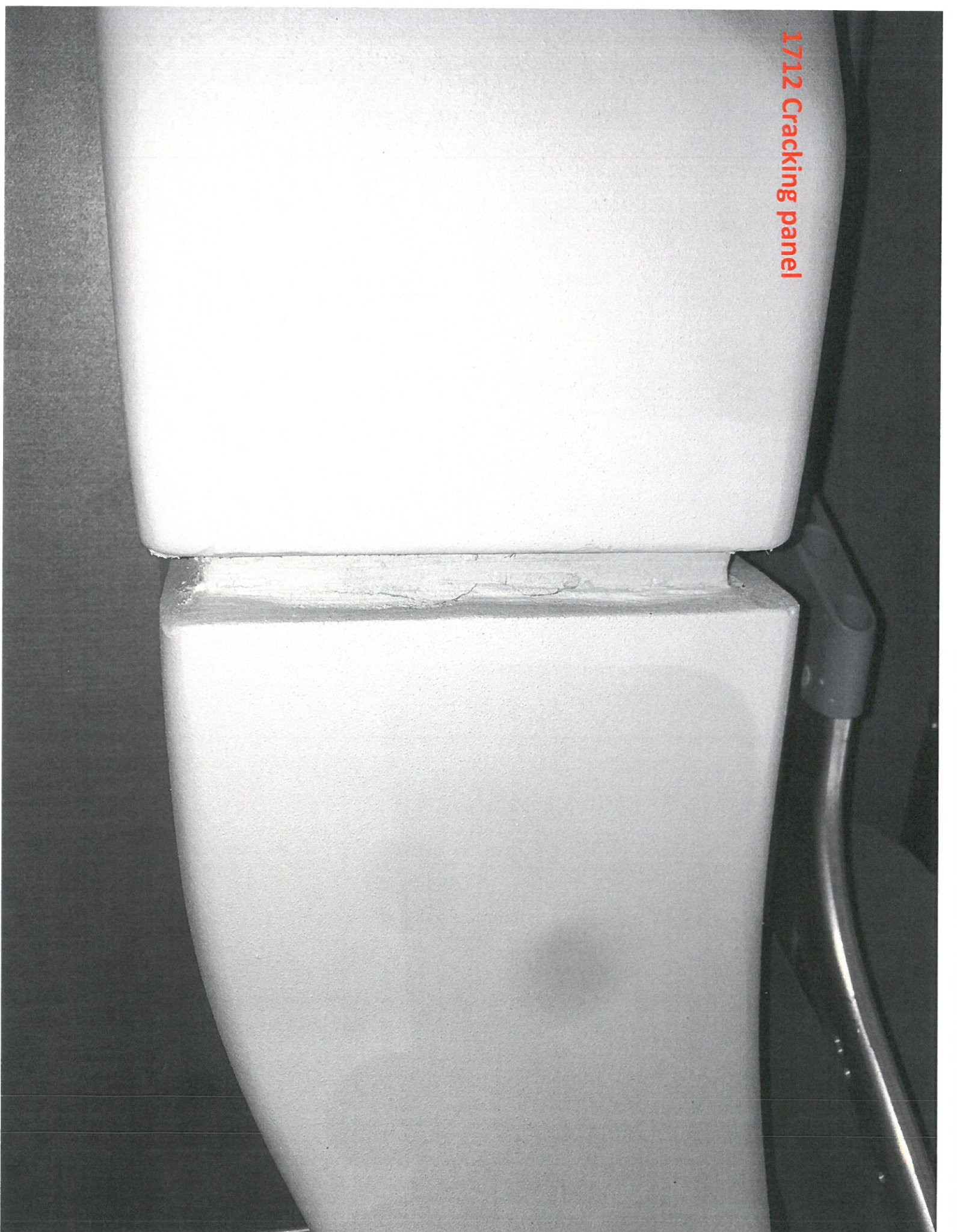


1712 Lines and cables exposed to road hazards





1712 Cracking panel





1712 Sensitive edge line  
rubbing

